

03-12 REAR AXLE

REAR AXLE LOCATION INDEX..... 03-12-1

WHEEL HUB, HUB SPINDLE

PRE-INSPECTION 03-12-1

Wheel Bearing Play Inspection 03-12-1

WHEEL HUB, HUB SPINDLE (DRUM BRAKE TYPE)

REMOVAL/INSTALLATION 03-12-2

Locknut Removal Note..... 03-12-3

ABS Sensor Rotor (With ABS) Removal Note 03-12-3

ABS Sensor Rotor (With ABS) Installation Note03-12-3

Locknut Installation Note03-12-4

WHEEL HUB, HUB SPINDLE (DISC BRAKE TYPE)

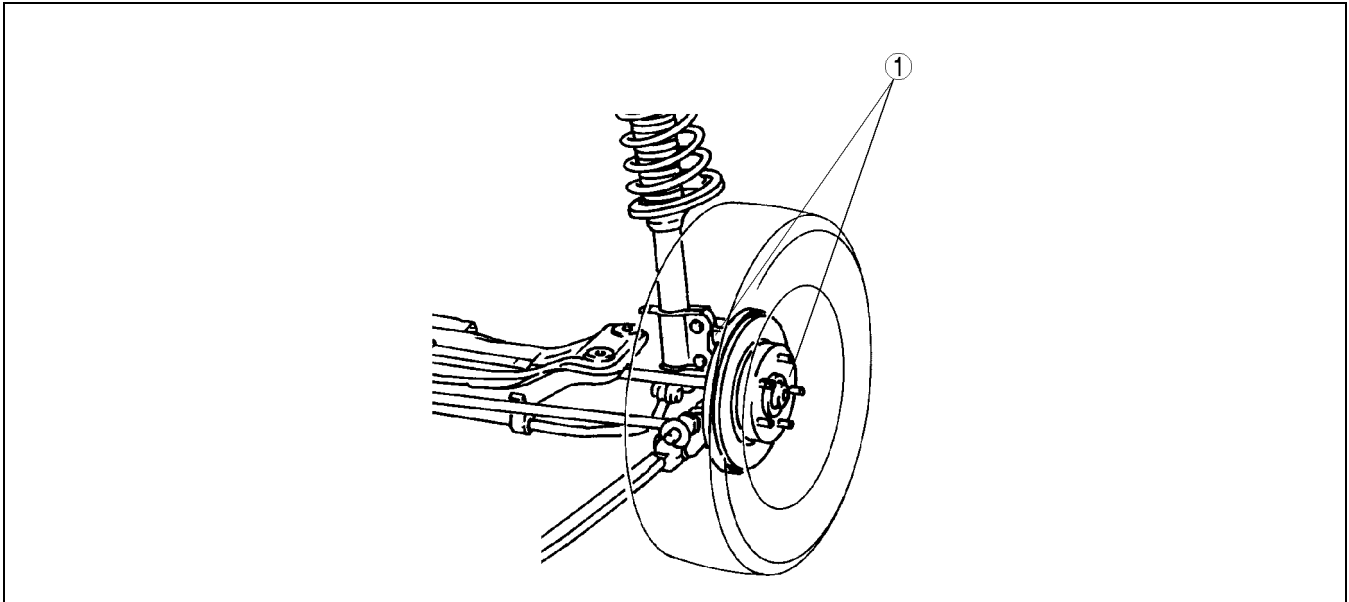
REMOVAL/INSTALLATION.....03-12-4

ABS Sensor Rotor (With ABS) Installation Note03-12-5

03-12

REAR AXLE LOCATION INDEX

A3U031205000W01



Z3U0312W005

1	Wheel hub, hub spindle (See 03-12-1 WHEEL HUB, HUB SPINDLE PRE-INSPECTION) (See 03-12-4 WHEEL HUB, HUB SPINDLE (DISC BRAKE TYPE) REMOVAL/INSTALLATION) (See 03-12-2 WHEEL HUB, HUB SPINDLE (DRUM BRAKE TYPE) REMOVAL/INSTALLATION)
---	---

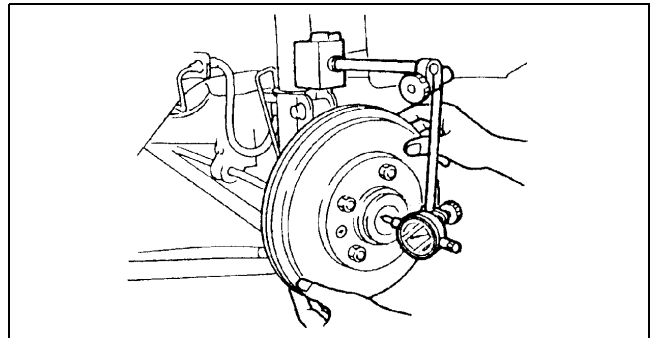
WHEEL HUB, HUB SPINDLE PRE-INSPECTION

A3U031205000W02

Wheel Bearing Play Inspection

1. Position a dial indicator against the brake drum (brake drum type), or wheel hub (disc brake type).
2. Push and pull the rear brake component by hand in the axial direction and measure the wheel bearing play.
 - If the bearing play exceeds the specification, replace the wheel hub component as necessary and tighten the locknut to the specified torque and retest.

Wheel bearing play
0.05 mm {0.002 in}



X3U312WA0

REAR AXLE

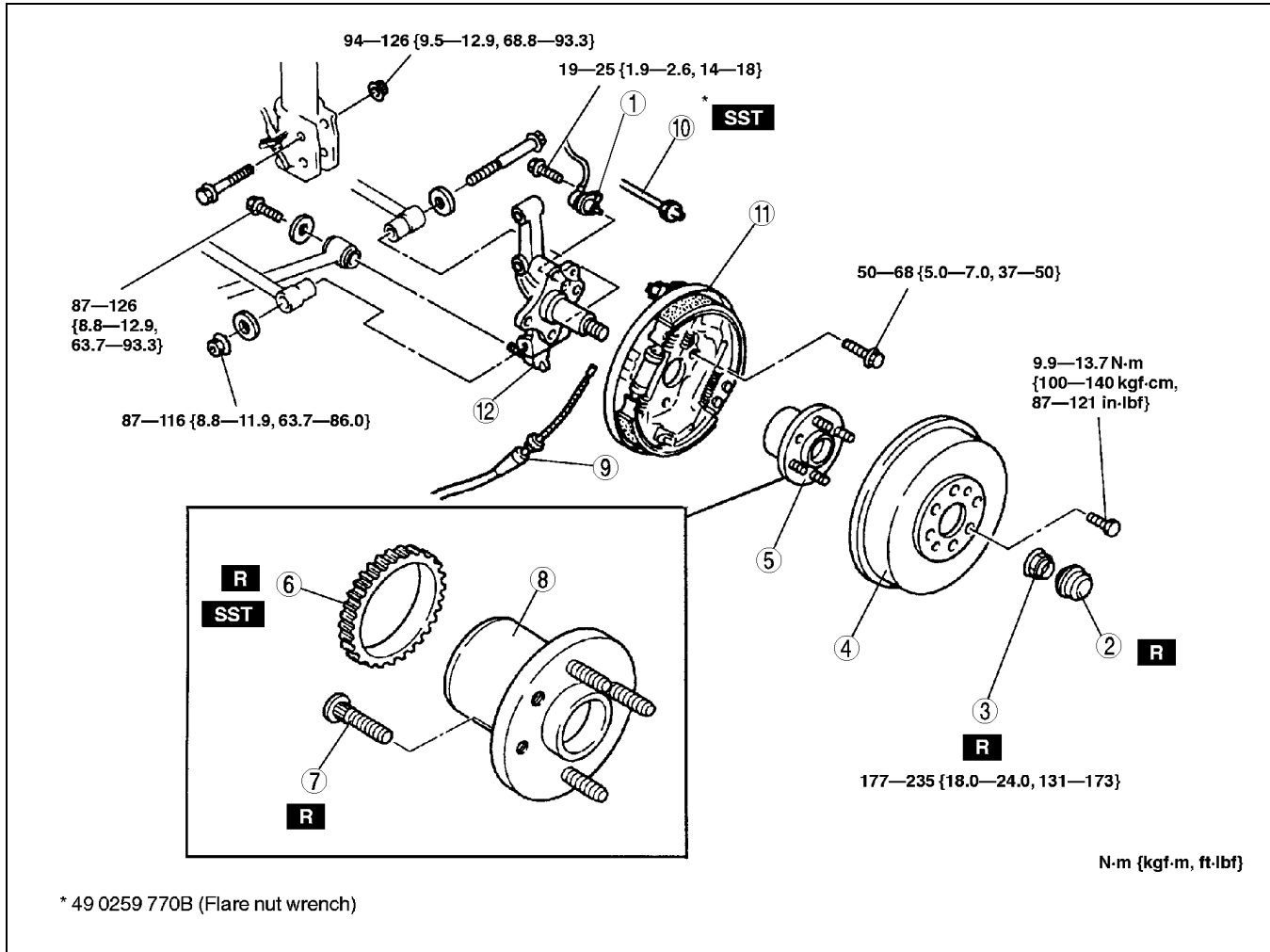
WHEEL HUB, HUB SPINDLE (DRUM BRAKE TYPE) REMOVAL/INSTALLATION

A3U031205000W03

Caution

- Performing the following procedures without first removing the ABS wheel-speed sensor may possibly cause an open circuit in the harness if it is pulled by mistake. Before performing the following procedures, remove the ABS wheel-speed sensor (axle side) and fix it to an appropriate place where the sensor will not be pulled by mistake while servicing the vehicle.

- Remove in the order indicated in the table.
- Install in the reverse order of removal.



Z3U0312W001

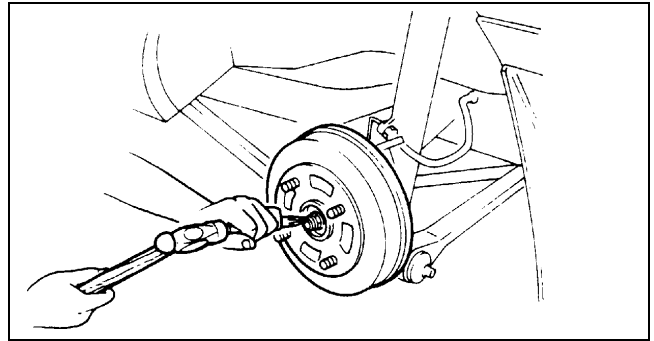
1	ABS-wheel speed sensor
2	Hub cap
3	Locknut (See 03-12-3 Locknut Removal Note) (See 03-12-4 Locknut Installation Note)
4	Brake drum
5	Wheel hub and ABS sensor rotor (with ABS)
6	ABS sensor rotor (with ABS) (See 03-12-3 ABS Sensor Rotor (With ABS) Removal Note) (See 03-12-3 ABS Sensor Rotor (With ABS) Installation Note)

7	Hub bolt (See 03-11-5 Hub Bolt Removal Note) (See 03-11-5 Hub Bolt Installation Note)
8	Wheel hub
9	Parking brake cable
10	Brake pipe
11	Rear brake component
12	Hub spindle

REAR AXLE

Locknut Removal Note

1. Raise the staked portion of the locknut using a small cape chisel and a hammer.
2. Lock the hub by applying the brakes.
3. Remove the locknut.



X3U312WA2

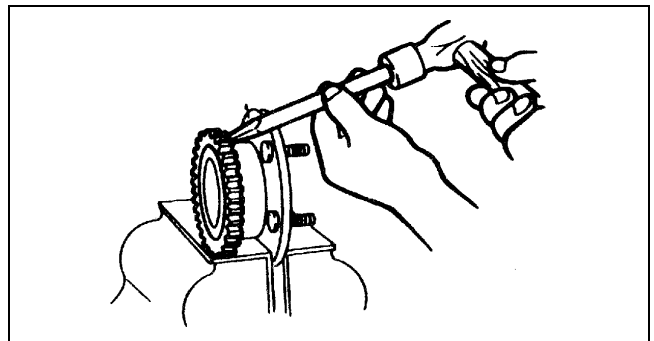
03-12

ABS Sensor Rotor (With ABS) Removal Note

Note

- The sensor rotor does not need to be removed unless it is being replaced.

1. Remove the sensor rotor using a chisel.



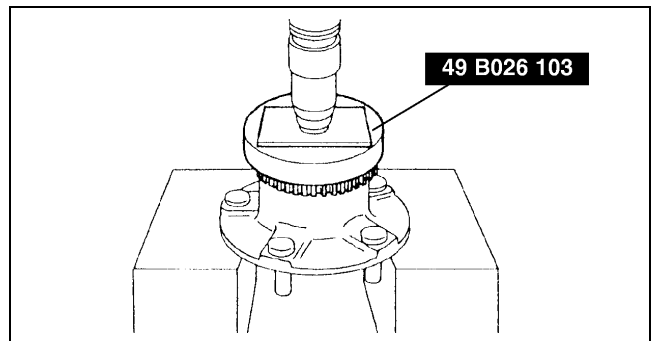
X3U312WA3

ABS Sensor Rotor (With ABS) Installation Note

1. Set the **SST** as shown in the figure.

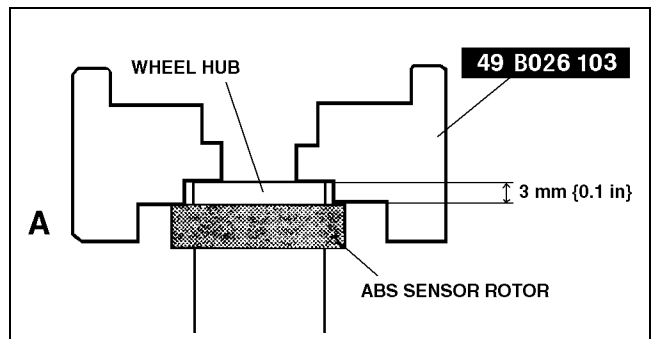
Caution

- Position the **SST** so that marking **A** faces the bottom.



X3U312WA4

2. Press on the new sensor rotor using the **SST** and a press.

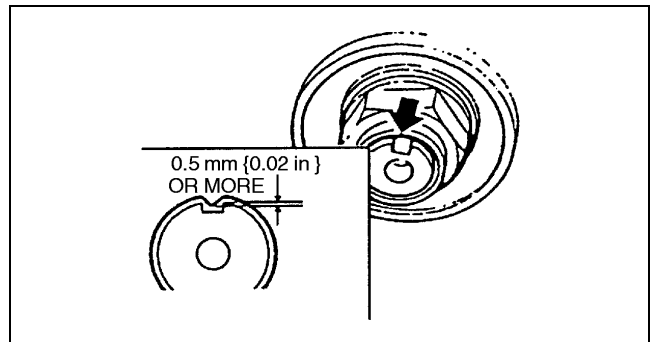


A3U0312W003

REAR AXLE

Locknut Installation Note

1. Install a new locknut and stake it as shown.



X3U312WA5

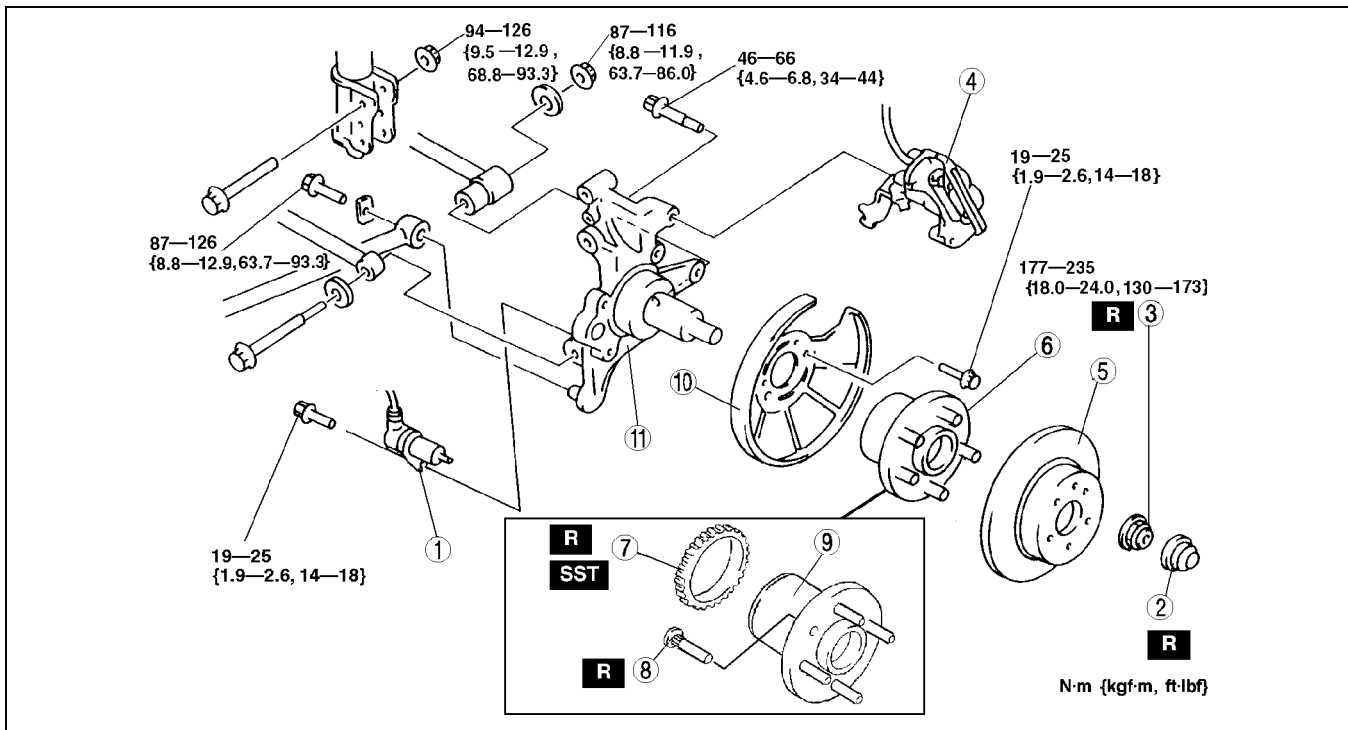
WHEEL HUB, HUB SPINDLE (DISC BRAKE TYPE) REMOVAL/INSTALLATION

A3U031205000W04

Caution

- Performing the following procedures without first removing the ABS wheel-speed sensor may possibly cause an open circuit in the harness if it is pulled by mistake. Before performing the following procedures, remove the ABS wheel-speed sensor (axle side) and set it to an appropriate place where the sensor will not be pulled by mistake while servicing the vehicle.

1. Remove in the order indicated in the table.
2. Install in the reverse order of removal.



A3U0312W001

1	ABS wheel-speed sensor
2	Hub cap
3	Locknut (See 03-12-2 WHEEL HUB, HUB SPINDLE (DRUM BRAKE TYPE) REMOVAL/INSTALLATION)
4	Brake caliper component
5	Disc plate
6	Wheel hub and ABS sensor rotor

7	ABS sensor rotor (See 03-12-2 WHEEL HUB, HUB SPINDLE (DRUM BRAKE TYPE) REMOVAL/INSTALLATION) (See 03-12-5 ABS Sensor Rotor (With ABS) Installation Note)
8	Hub bolt
9	Wheel hub component
10	Dust cover
11	Hub spindle

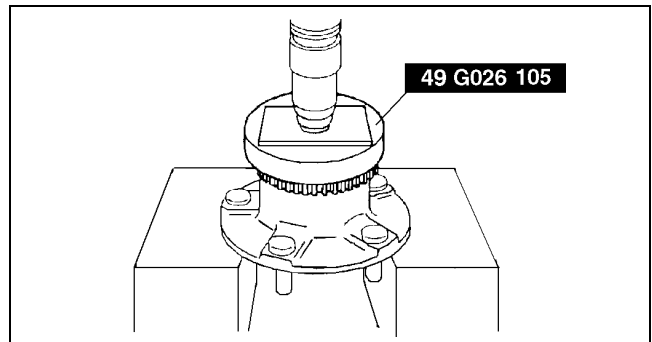
REAR AXLE

ABS Sensor Rotor (With ABS) Installation Note

1. Set the **SST** as shown in the figure.

Caution

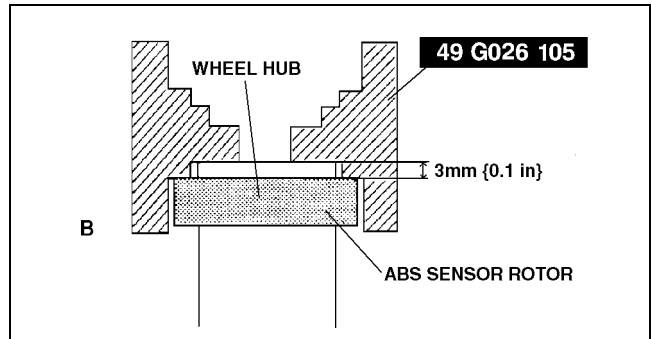
- Position the **SST** so that marking **B** faces the bottom.



A3U0312W002

03-12

2. Press on the new sensor rotor using the **SST** and a press.



A3U0312W004